

Nidec

All for dreams

PROJECT PORTFOLIO



**Saline Water Conversion Corporation
(SWCC) Jubail Housing Compound**

Location: Al Jubail, Saudi Arabia

Cars :	248
Contract Type :	AC
Contract Speed:	1.0 m/s
Floors:	4
Machine:	ACPM Gearless
Roping:	2:1
Capacity:	630kgs



**Saudi Aramco South Dahrhan Ownership Project,
Saudi Arabia**

Cars :	54
Contract Type :	AC
Contract Speed:	1.0 m/s
Floors:	3
Machine:	ACPM Gearless
Roping:	2:1
Capacity:	900kgs / 1600kgs / 1814kgs



**Al Ahsa Hospital Saudi Aramco,
Al Ahsa, Saudi Arabia**

Cars :	4
Contract Type :	AC
Contract Speed:	1.0 m/s
Floors:	4
Machine:	ACPM Gearless
Roping:	2:1
Capacity:	2000kgs



**Saudi Aramco Schools
Dammam, Saudi Arabia**

Cars : 15
Contract Type : AC
Contract Speed: 0.75 m/s
Floors: 3
Machine: Hydraulic
Capacity: 850kgs ~ 2500kgs



**King Abdul Aziz Centre for World Culture by Saudi Aramco
Dahran, Saudi Arabia**

Cars : 1
Contract Type : AC
Contract Speed: 1.0 m/s
Floors: 2
Machine: ACPM Gearless
Roping: 4:1
Capacity: 3500kgs

Nidec

All for dreams

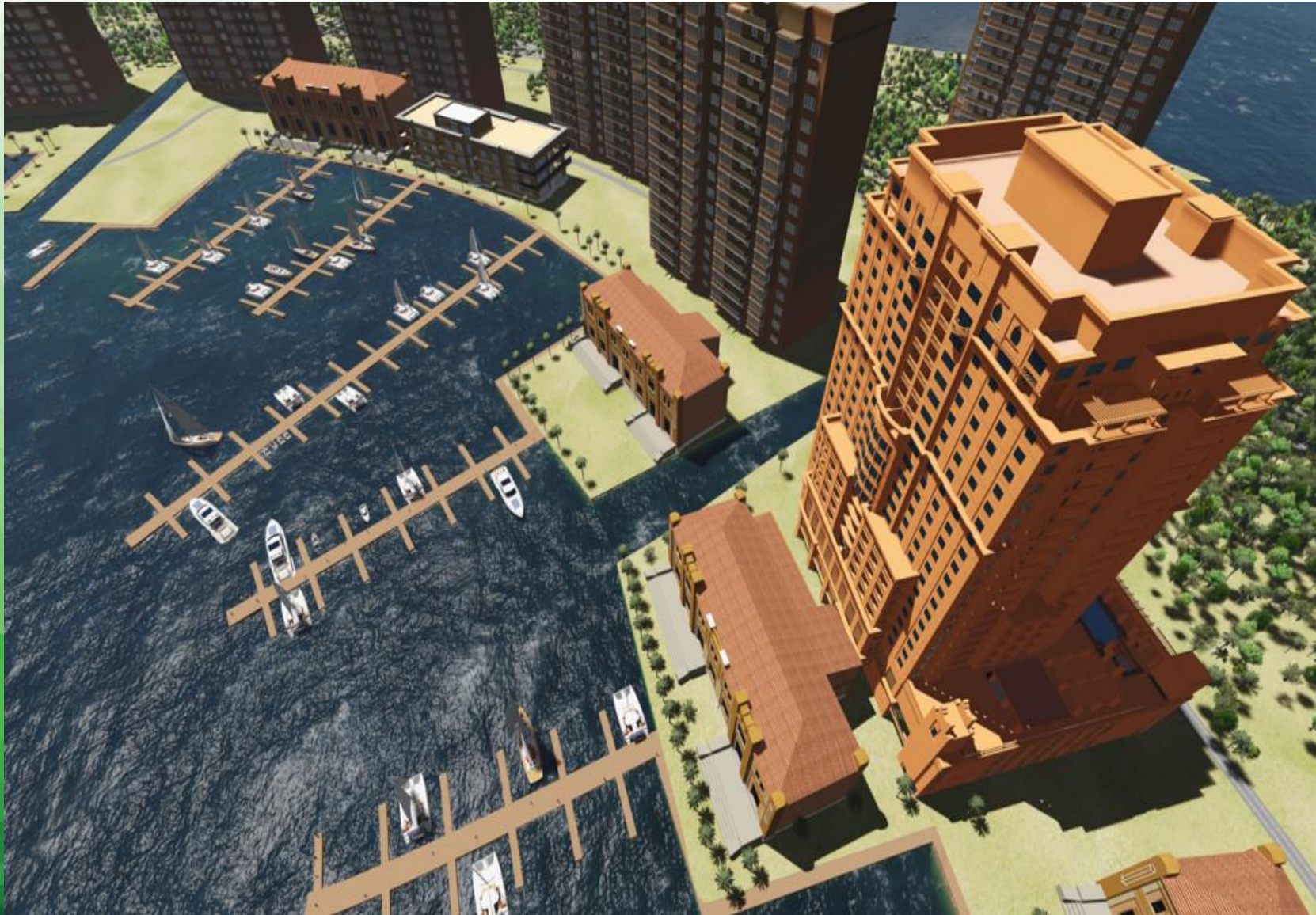


Paul Café, The Butcher Shop & Grills, Kosebasi Restaurant

Saudi Arabia

Cars :	8
Contract Type :	AC
Contract Speed:	1.5 m/s
Floors:	2
Machine:	ACPM Gearless
Roping:	2:1
Capacity:	630-800kgs





Jumana Tower II

The Pearl, Doha, Qatar

Cars :	6
Contract Type :	AC
Contract Speed:	3.0 m/s
Floors:	2
Machine:	ACPM Gearless
Roping:	2:1
Capacity:	1600kgs / 2000kgs



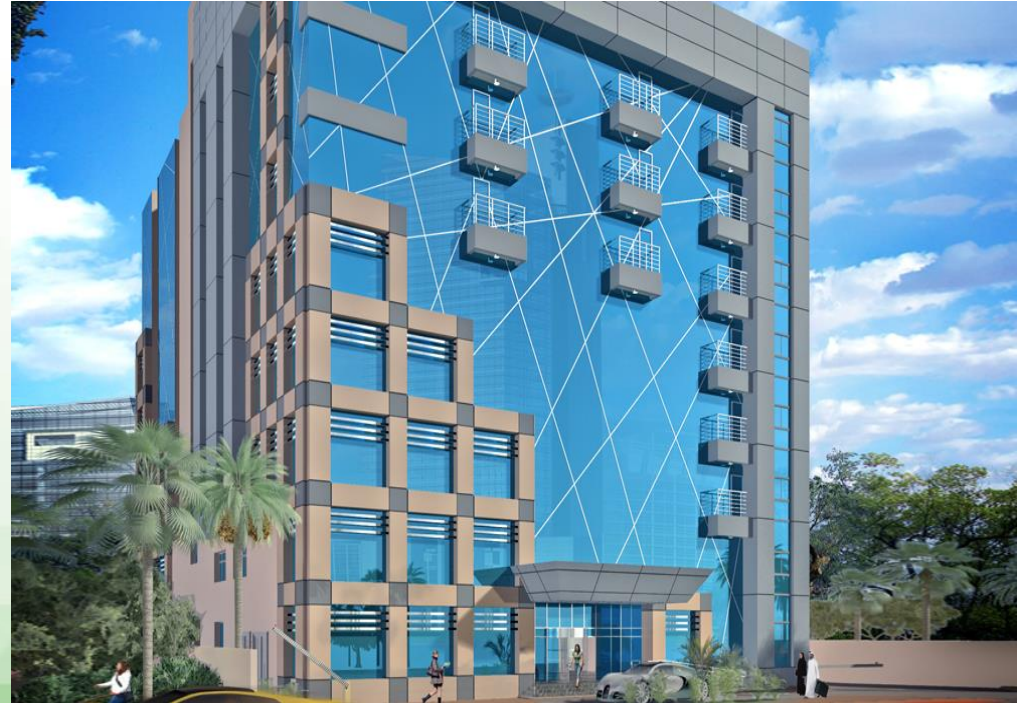
Lusail Buildings, Doha, Qatar

Cars : 34
Contract Type : AC
Contract Speed: 1.0m/s
Floors: 6
Machine: ACPM Gearless
Roping: 2:1
Capacity: 1150kgs,630kgs



Dar Al Salam Mall Shopping Mall Doha, Qatar

Cars : 12 Elevators, 2 Escalators, 2 Travellators
Contract Type : AC
Contract Speed: 1.0m/s
Floors: 3
Machine: ACPM Gearless
Roping: 2:1
Capacity: 1150kgs ~ 3000kgs



Al Bustan Hotel Complex
Doha, Qatar

Cars :	34
Contract Type :	AC
Contract Speed:	1.0 ~ 1.75 m/s
Floors:	6 ~ 10
Machine:	ACPM Gearless
Roping:	2:1
Capacity:	630kgs ~ 1150kgs



Doha Souq Mall
Doha, Qatar

Cars :	12 Elevators, 8 Escalators
Contract Type :	AC
Contract Speed:	1.6m/s
Floors:	4
Machine:	ACPM Gearless
Roping:	2:1
Capacity:	630-2000kgs



Ezdan Oasis Villa
Doha, Qatar

Cars :	35 Elevators
Contract Type :	AC
Contract Speed:	1.0m/s
Floors:	4
Machine:	ACPM Gearless
Roping:	2:1
Capacity:	630kgs



Qatar Petroleum North Field Alpha, Qatar

Cars :	1 Elevator
Contract Type :	AC
Contract Speed:	1.0m/s
Floors:	4
Machine:	ACPM Gearless
Roping:	2:1
Capacity:	630kgs



Najma Mixed Use Buildings Doha, Qatar

Cars :	4
Contract Type :	AC
Contract Speed:	1.75m/s
Floors:	13
Machine:	ACPM Gearless
Roping:	2:1
Capacity:	630kgs



Marriot Hotel
Doha, Qatar

Cars :	4 Elevators
Contract Type :	AC
Contract Speed:	1.5 m/s ~ 2.5m/s
Floors:	9 ~ 13
Machine:	ACPM Gearless
Roping:	2:1
Capacity:	630kgs ~ 1600kgs



Mercure Grand Hotel
Doha, Qatar

Cars :	4 Elevators
Contract Type :	AC
Contract Speed:	1.75 m/s
Floors:	14
Machine:	ACPM Gearless
Roping:	2:1
Capacity:	800kgs



Al Mansoura Residential Building
Doha, Qatar

Cars : 2 Elevators
 Contract Type : AC
 Contract Speed: 1m/s
 Floors: 10
 Machine: ACPM Gearless
 Roping: 2:1
 Capacity: 450Kgs



Hypermarket Buildings
Doha, Qatar

Cars : 13 Elevators, 2 Escalators, 2 Travellers
 Contract Type : AC
 Contract Speed: 1.0m/s
 Floors: 3
 Machine: ACPM Gearless
 Roping: 2:1
 Capacity: 1000kgs ~ 3000kgs



Dubai Lagoon Community

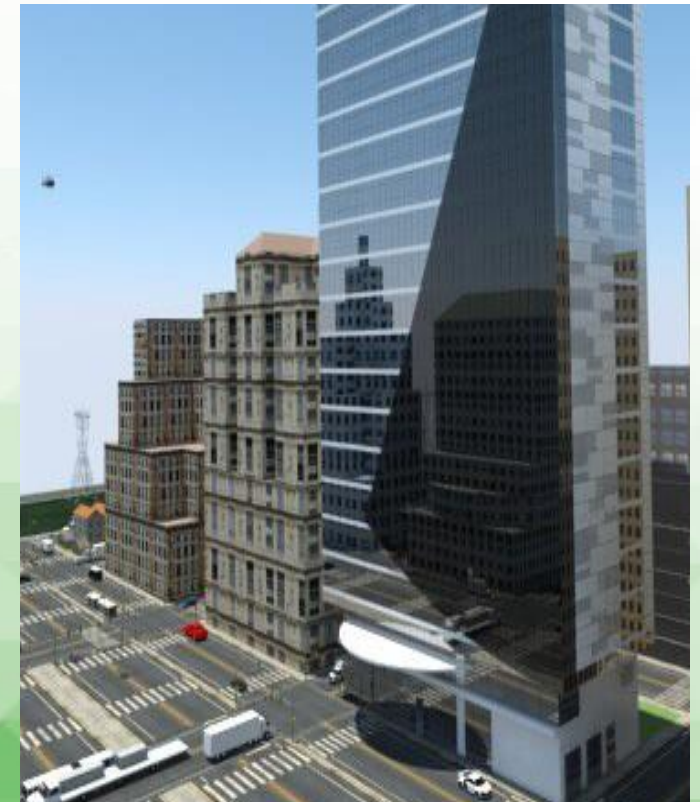
Dubai, UAE

Cars :	16 Elevators
Contract Type :	AC
Contract Speed:	1.75 m/s
Floors:	10
Machine:	ACPM Gearless
Roping:	2:1
Capacity:	750kgs

Shiraa Hotel Apartments

Abu Dhabi, UAE

Cars :	2 Car Elevators
Contract Type :	AC
Contract Speed:	0.5 m/s
Floors:	05
Machine:	ACPM Gearless
Roping:	4:1
Capacity:	3000kgs





**Al Habtoor Tower (Al Taawun)
Sharjah, UAE**

Cars :	3 Elevators
Contract Type :	AC
Contract Speed:	2.5 m/s
Floors:	33
Machine:	ACPM Gearless
Roping:	2:1
Capacity:	1000kgs



**Asteco JVC Villas
Dubai, UAE**

Cars :	12 Elevators
Contract Type :	AC
Contract Speed:	1 m/s
Floors:	4
Machine:	ACPM Gearless
Roping:	2:1
Capacity:	320kgs



Westzone Supermarket
Dubai, UAE

Cars : 2 Elevators
 Contract Type : AC
 Contract Speed: 1 m/s
 Floors: 2
 Machine: ACPM Gearless
 Roping: 2:1
 Capacity: 1000kgs



Zayani Auto Service Centre
Manama, Bahrain

Cars : 2 Car Elevators
 Contract Type : AC
 Contract Speed: 0.5 m/s
 Floors: 06
 Machine: ACPM Gearless
 Roping: 4:1
 Capacity: 3000kgs

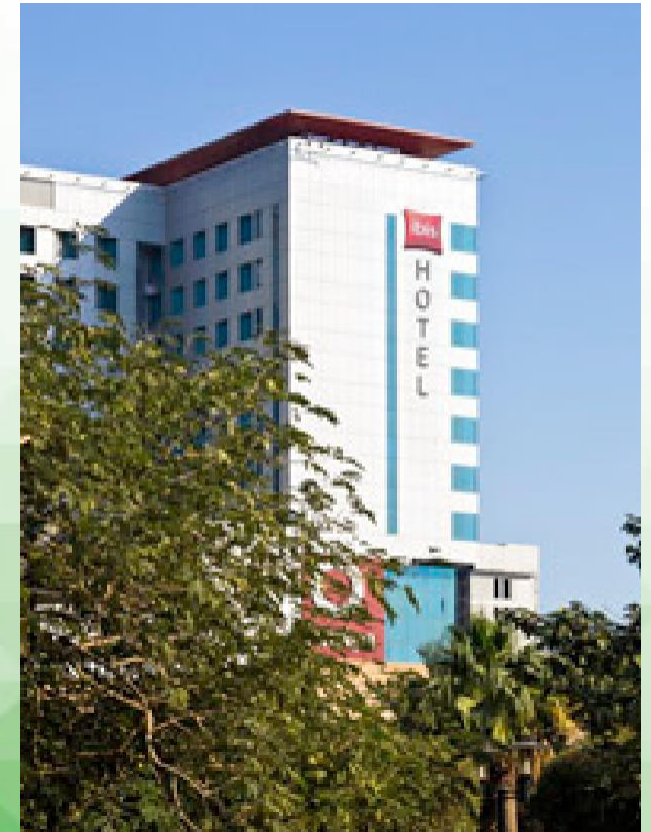


**Audi Showroom
Kuwait City, Kuwait**

Cars : 3 Car Elevators
Contract Type : AC
Contract Speed: 0.5 m/s
Floors: 03
Machine: ACPM Gearless
Roping: 4:1
Capacity: 4000kgs

**Ibis Hotel
Kuwait City, Kuwait**

Cars : 1 Elevator
Contract Type : AC
Contract Speed: 1.5 m/s
Floors: 05
Machine: ACPM Gearless
Roping: 2:1
Capacity: 5000kgs





**Gate Mall at Fintas
Kuwait City, Kuwait**

Cars :	3 Elevators
Contract Type :	AC
Contract Speed:	1 m/s
Floors:	2
Machine:	ACPM Gearless
Roping:	2:1
Capacity:	2500kgs



**Luxen Plaza
Baku, Azerbaijan**

Cars :	11 Elevators
Contract Type :	AC
Contract Speed:	1.75 m/s
Floors:	7 ~ 21
Machine:	ACPM Gearless
Roping:	2:1
Capacity:	630kgs ~ 1150kgs



**Azeri TV Tower
Baku, Azerbaijan**

Cars :	2 Elevators
Contract Type :	AC
Contract Speed:	4 m/s
Floors:	27
Machine:	ACPM Gearless
Roping:	1:1
Capacity:	1000kgs



**USA Embassy
Kabul, Afghanistan**

Cars :	11 Elevators
Contract Type :	AC
Contract Speed:	1 m/s ~ 2 m/s
Floors:	2 ~ 9
Machine:	ACPM Gearless
Roping:	2:1
Capacity:	1600kgs ~ 2000kgs



**Sydney International Airport Terminal
Sydney, Australia**

Cars : 1 Elevators
Contract Type : AC
Contract Speed: 1.6 m/s
Floors: 3
Machine: ACPM Gearless
Roping: 2:1
Capacity: 2500kgs

**ARTI2000 Ofis
Istanbul, Turkey**

Cars : 3 Elevator
Contract Type : AC
Contract Speed: 1.6 m/s
Floors: 14
Machine: ACPM Gearless
Roping: 2:1
Capacity: 800kgs





Hammersmith Bridge
London, UK

Cars :	1 Elevators, 1 Car Elevator
Contract Type :	AC
Contract Speed:	0.3 m/s & 1 m/s
Floors:	2 & 5
Machine:	ACPM Gearless
Roping:	2:1
Capacity:	2500kgs & 630kgs



Riverside Housing Development
London, UK

Cars :	8 Elevators
Contract Type :	AC
Floors:	14
Machine:	ACPM Gearless
Roping:	1:1
Capacity:	1134kgs



**Washington Monument,
Washington D.C, USA**

Cars : 1 Elevators
Contract Type : DC
Contract Speed: 2.5 m/s
Floors: 50 (Tourist Stages)
Machine: ACPM Gearless
Capacity: 1134kgs



**Hiranandani Bayview,
Chennai, India**

Cars : 6 Elevators
Contract Type : AC
Contract Speed: 1 & 5 m/s
Floors: 3 ~ 41
Machine: ACPM Gearless
Roping: 1:1 (Double Wrap)
Capacity: 840kgs & 1150Kgs



**Arte Plus,
Kuala Lumpur, Malaysia**

Cars : 32 Elevators
Contract Type : AC
Contract Speed: 3 m/s ~ 5 m/s
Floors: 29 ~ 62
Machine: ACPM Gearless
Capacity: 1025kgs ~ 1365kgs



**Saudi Aramco Shaybah
Saudi Arabia**

Cars : 1 Elevators
Contract Type : AC
Contract Speed: 1m/s
Floors: 3
Machine: ACPM Gearless
Roping: 2:1
Capacity: 1588kgs



**Savoy Resort & Spa
Seychelles**

Cars : 6 Elevators, 1 Hydraulic Elevator
Contract Type : AC
Contract Speed: 1.5 m/s & 1 m/s
Floors: 3 ~ 6
Machine: ACPM Gearless & Hydraulic
Roping: 2:1
Capacity: 1000kgs



**Eden Bleu Hotel
Seychelles**

Cars : 2 Elevators
Contract Type : AC
Contract Speed: 1 m/s
Floors: 4
Machine: ACPM Gearless
Roping: 2:1
Capacity: 1275kgs & 1600kgs



**Eden Plaza Shopping Centre
Seychelles**

Cars :	3 Elevators
Contract Type :	AC
Contract Speed:	1 m/s
Floors:	2 & 3
Machine:	ACPM Gearless
Roping:	2:1
Capacity:	800kgs & 1000kgs

Nidec

All for dreams

THINK ELEVATOR THINK NIDEC